

translate

home wrecks charts references diving/fishing biology interactive



SS Glenisla (+1917)

search:
show prev. names
[search](#) [advanced](#) [A-Z](#)

Details

general

nationality: [british](#)
purpose: [transport](#)
type: [cargo](#)
propulsion: [steamer](#)
date built: [1878](#)
is nickname: no
status: unknown

details

weight (tons): 1423 [grt](#)
dimensions: 76,2 x 10 x 6,2 m
material: iron
engine: compound engine
power: 150 [n.h.p.](#)
speed:

about the loss

cause lost: [collision](#)
date lost: [21/11/1917](#) [dd/mm/yyyy]
casualties:

about people

builder: [W. B. Thompson & Co. Ltd., Dundee](#)
owner: [Mitchell J. & Sons \(James Mitchell & Sons\), Dundee](#)
captain:

about the wreck

depth: 45 max. / 31 min. (m)
orientation:
protected:
war grave:

references

reference(s): [Hocking C., Dictionary of Disasters at Sea during the Age of Steam](#)

updates

entered by: [Vleggeert Nico](#)
entered: 29/05/2010
last update: [Vleggeert Nico](#)
last update:

Position

[1] [Letzens Jan](#) 01/10/2009

latitude: [UK hydro member](#)
longitude: [UK hydro member](#)
AIS: [check AIS](#)
mark: [add position to my marks](#)
dist. homeport: [dist. homeport](#)
ref. used: [UK Hydrographic Office](#)

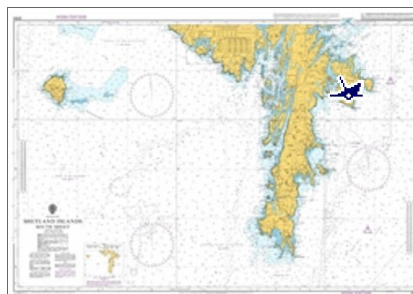
show neighbour. wrecks: [members only](#)

[more positions](#)

[insert new position](#)

The Wreck today

Pictures



[Letzens Jan](#) 22/10/2009
[Shetland Islands south sheet](#)
This is a thumbnail version of the chart **Shetland Islands south sheet**. You do not have sufficient rights to see this chart in full resolution [11574x7679 pixels]. Click [this link](#) to subscribe to this service.



[insert new picture](#)

Hydrographic Service UK

WRECK REPORT

HYDROGRAPHIC SERVICE FOR THE UK

DATABASE

WRECK REPORT

LIVE

The wrecksite has been derived in part from material obtained from the [UK Hydrographic Office](#) with the permission of the UK Hydrographic Office and Her Majesty's Stationery Office and the following authorities.

© British Crown Copyright, 2008.

History

[Vleggeert Nico](#) 29/05/2010

The British steamship Glenisla, on a voyage from Newcastle to Slemmestad, collided with S.S. Glenelg and sank in the main entrance to Lerwick harbour.

ref. [Hocking C., Dictionary of Disasters at Sea during the Age of Steam](#)
used: [during the Age of Steam](#)

[Letzens Jan](#) 01/10/2009

[UK hydro member](#)

ref. used: [UK Hydrographic Office](#)

[insert new history](#)

[Letzens Jan](#) 01/10/2009

[UK_hydro_member](#)

ref. used: [UK Hydrographic Office](#)

[insert wrecksite info](#)

Documents

[insert new document](#)

Movies

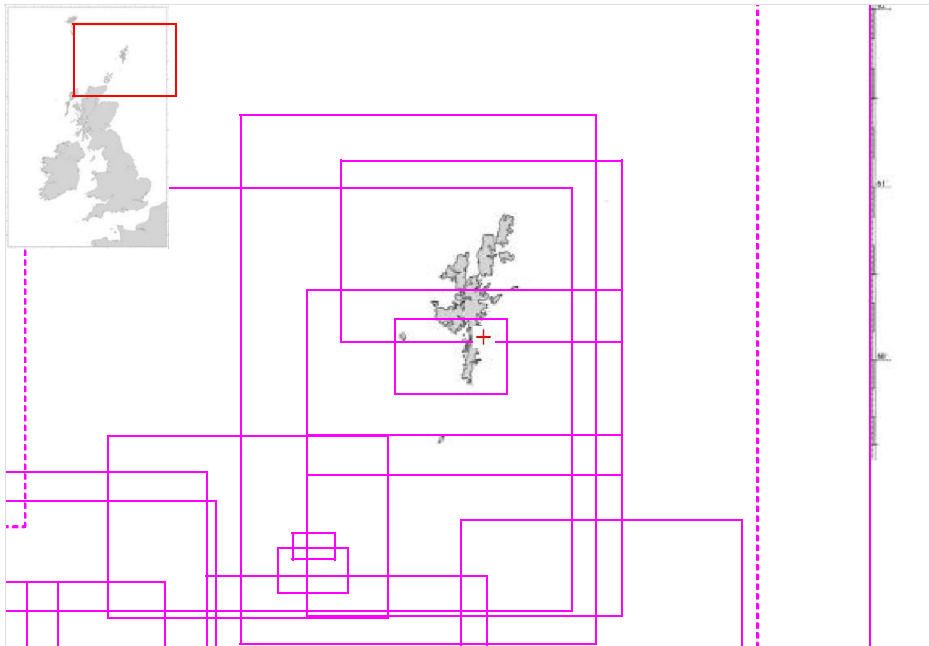
[Gosling Mark](#) 04/11/2009

Video Taken on 10/07/09. Despite its age it only has a few holes in the hull and the deck planking missing, the wreck lies upright on a sandy bottom at 42 metres.

copyrights: [Mark Gosling](#)

[insert new movie](#)

British Isles pref. [Google](#):



More charts: <

© [wrecksite](#)

© The Wrecksite 2011.
All rights reserved.

This information may not be copied, reproduced, translated, or reduced to any electronic medium or machine readable form, in whole or part, without the prior written consent of The Wrecksite.

[Update statistics](#)

[RSS](#) [XML](#)

[AJAX 1.0](#) [.NET](#)

[GOOGLE](#) [EARTH](#)

copyright © 2001-2011 The Wreck site

[sitemap](#)

[DONATE](#)